

An aerial photograph of a large lake with several houses and trees on the shore. The water is calm and reflects the sky. The houses are scattered along the shoreline, some with docks extending into the water. The trees are lush and green, suggesting a summer setting. The overall scene is peaceful and scenic.

# Housing Summit 2024

Pittsylvania County, VA

**PITTSYLVANIA**  
COUNTY, VIRGINIA

# Pittsylvania County

---

- Population: 59,952 (as of July 1, 2022)
- Population per square mile: 62.4
- Housing Units: 29,448
- Households, 2017-2021: 26,663

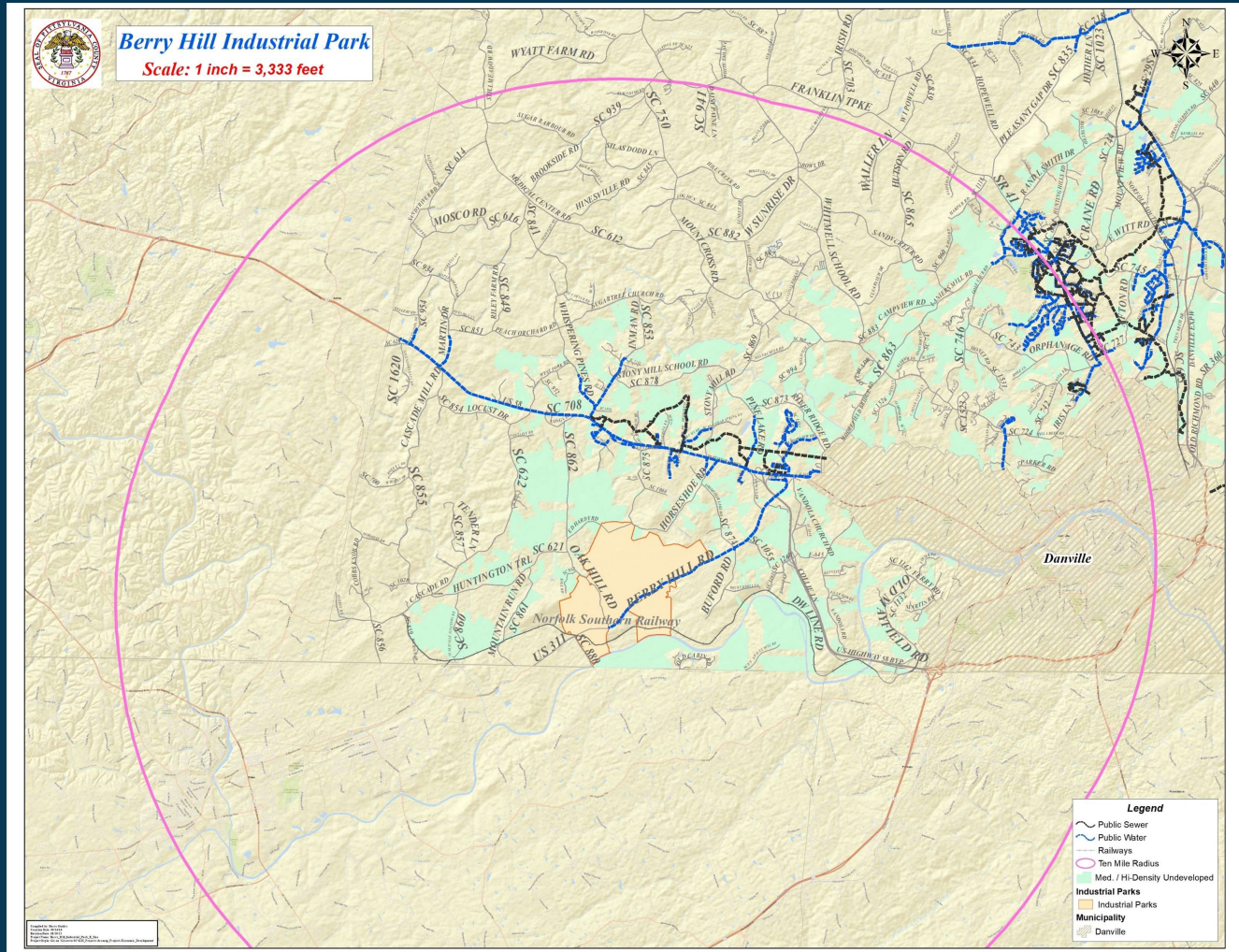




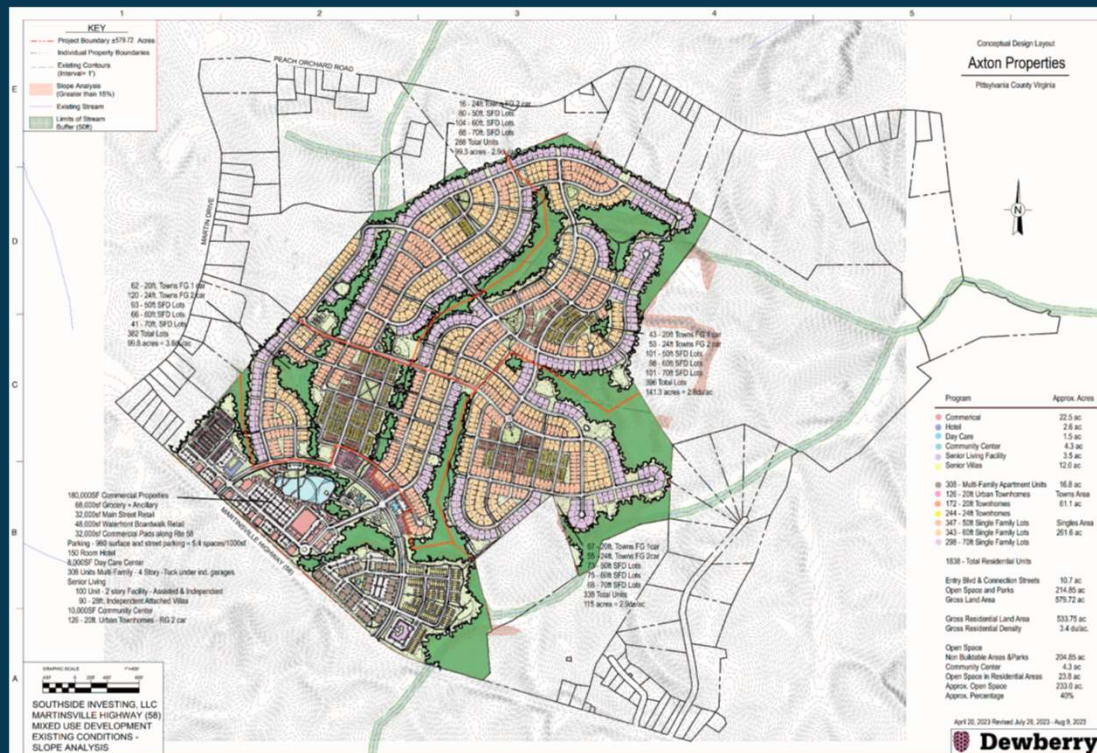
# Potential Future Development Areas



# Berry Hill MegaSite



# Southside Investing, LLC Mixed Use Development

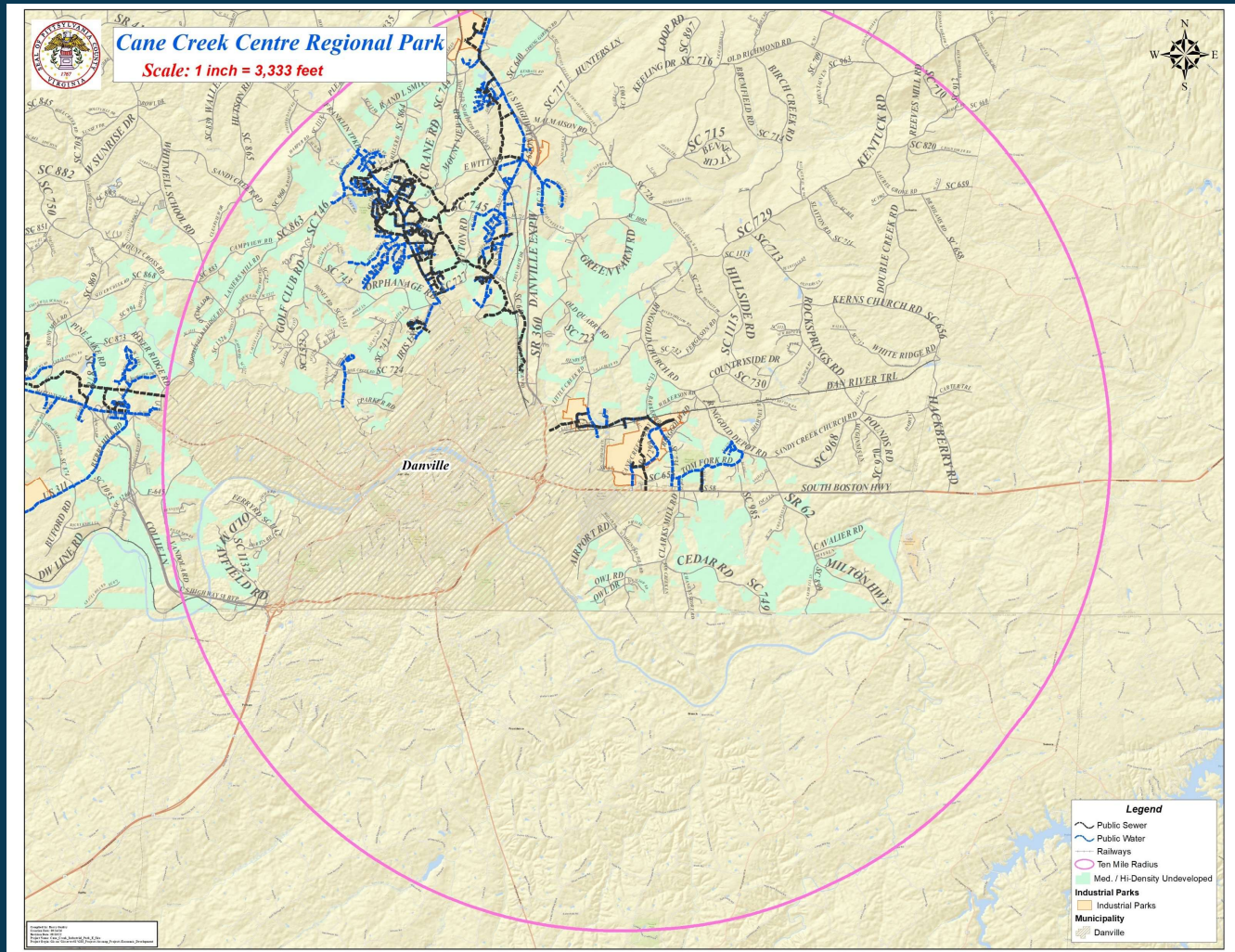


- 1838 Housing Units
- 308 Multi-Family Units
  - 542 Townhomes
  - 988 Single Family Detached

- Commercial Uses to include:
- Grocery anchored shopping center
  - Restaurants
  - Offices
  - Assisted living/dementia care facility
  - Hotel

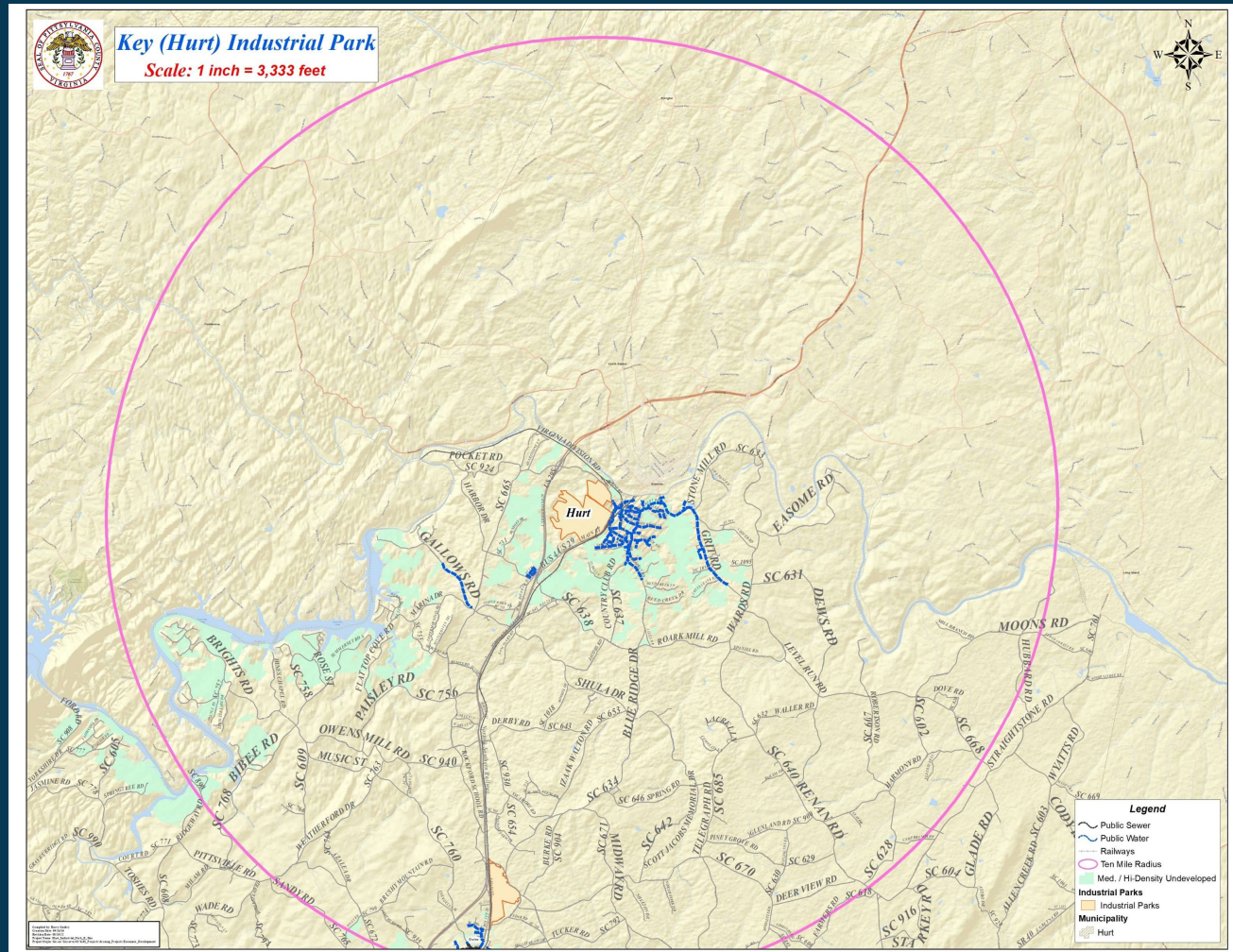


# Cane Creek Industrial Park



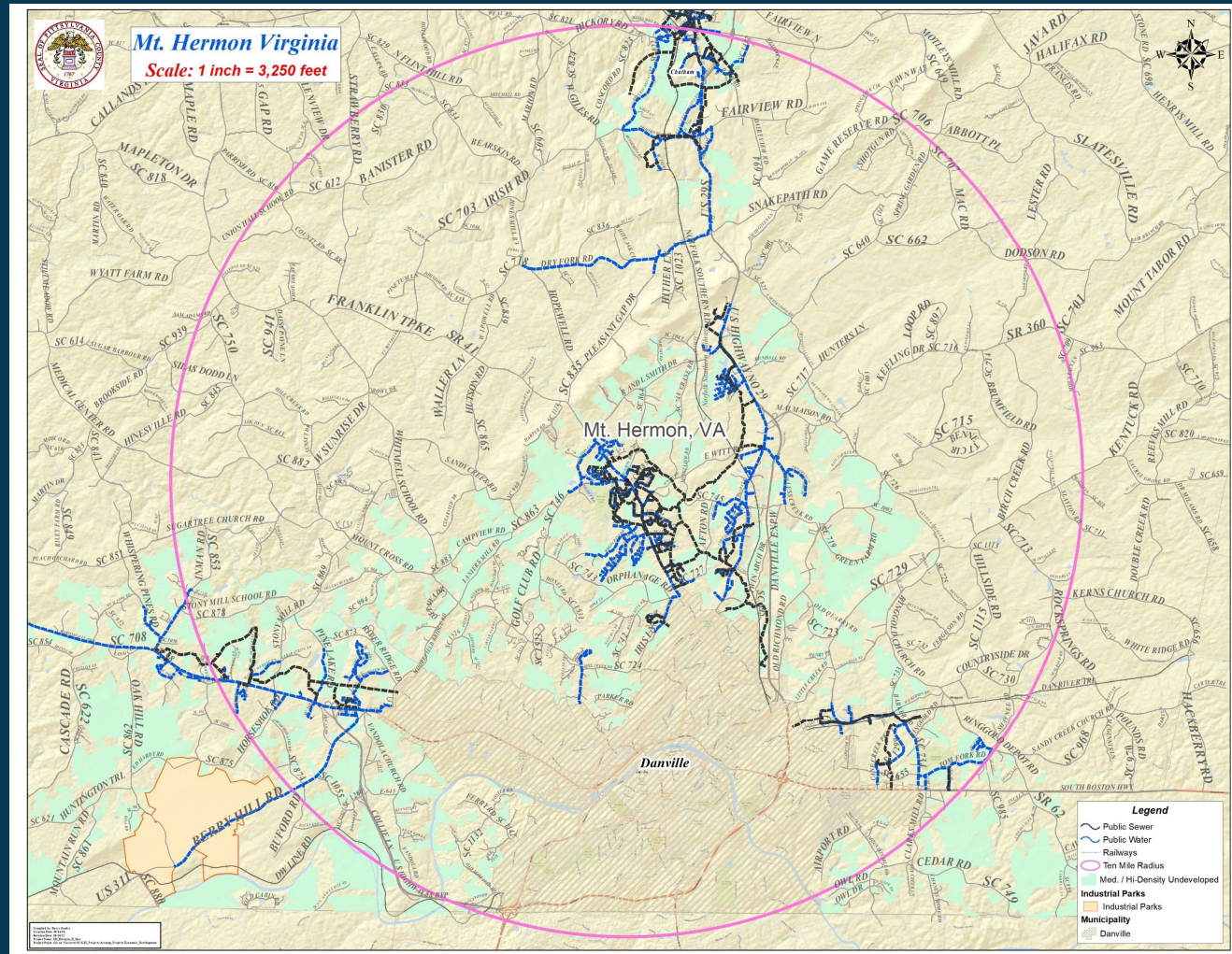


# Hurt Industrial Park





# Mount Hermon Community





An aerial photograph of a large lake with several houses and trees on the shore. The water is calm and reflects the sky. The houses are scattered along the shoreline, some with docks extending into the water. The trees are lush and green, suggesting a warm climate. The overall scene is peaceful and scenic.

# Questions?

Emily Ragsdale  
Director of Community Development  
[Emily.Ragsdale@pittgov.org](mailto:Emily.Ragsdale@pittgov.org)  
(434) 432-7974

Matthew Rowe  
Director of Economic Development  
[Matthew.Rowe@pittgov.org](mailto:Matthew.Rowe@pittgov.org)  
(434) 432-1669

**PITTSYLVANIA**  
COUNTY, VIRGINIA