



HistoricCollective.com

Community Supported Preservation
Unique | Uplifting | Secure | Affordable



23 Apartment Homes

Fieldale School Apartments

School Drive Apartments



39 Apartment Homes

Fayette Street Lofts

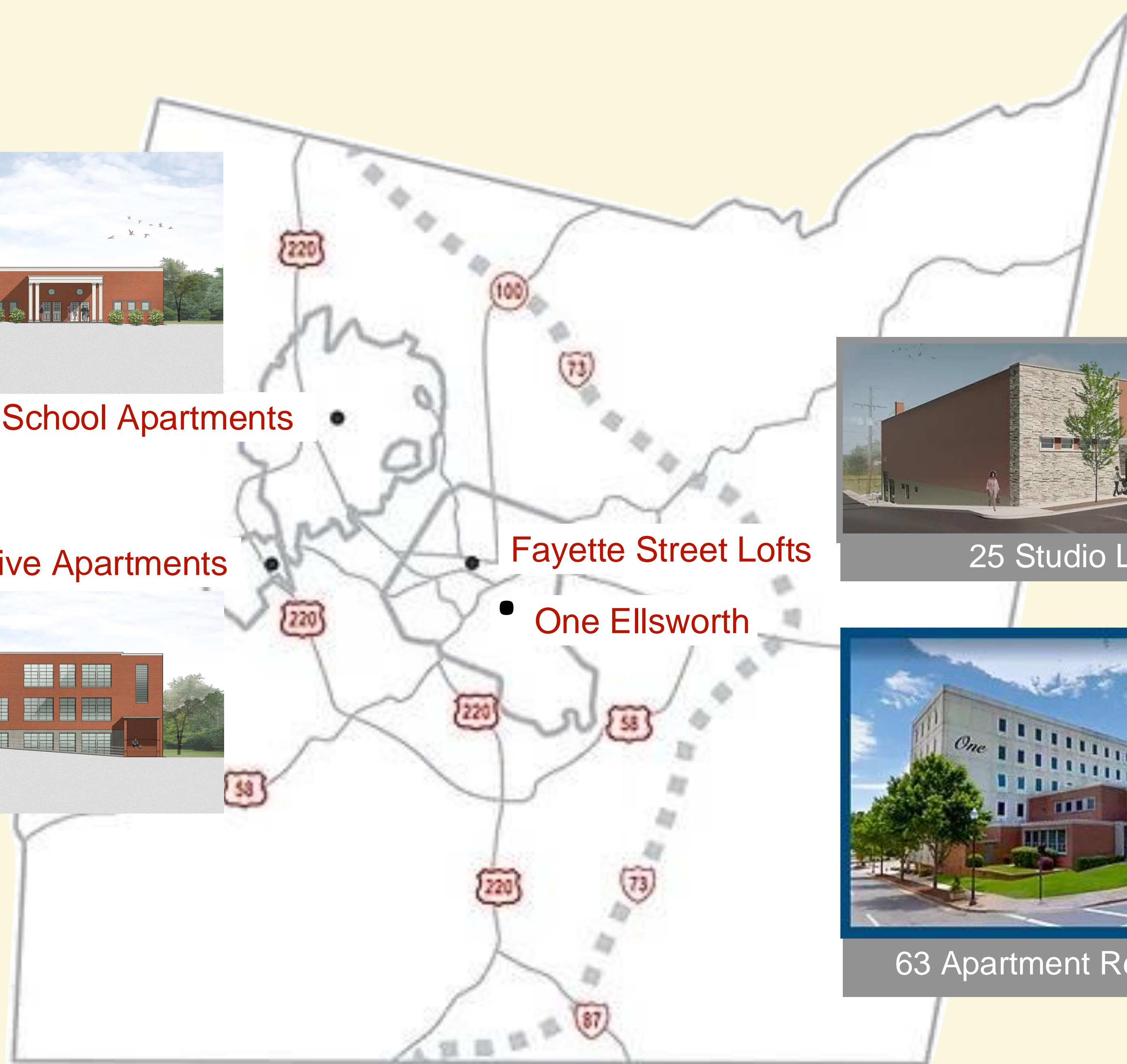
One Ellsworth



25 Studio Lofts



63 Apartment Residences





Fieldale School Apartments

23 Apartment Homes

26,936 sq ft

Total: \$3,825,772

Construction: \$2,847,894

Historic Tax Credits Received: \$1,530,893.







School Drive Apartments

39 Apartment Homes

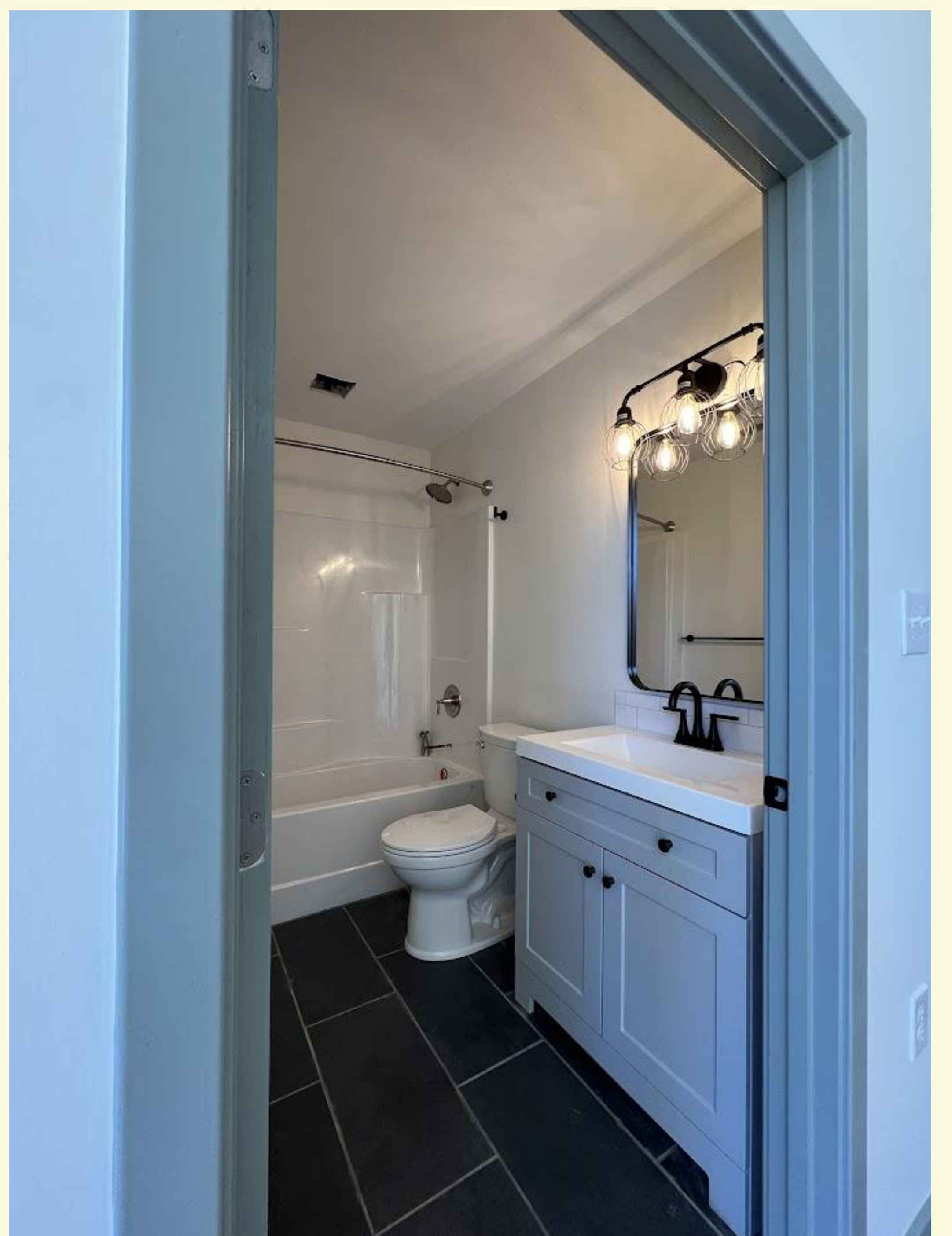
43,489 sq ft

Total: \$5,690,938

Construction: \$4,439,133

Historic Tax Credits Received: \$2,372,903







Fayette Street Lofts

25 Apartment Homes
2 Retail Storefronts
9 MakeYourSpace Studios

25,049 sq ft

Total: \$3,751,556

Construction: \$3,157,220

Historic Tax Credits Received: \$1,643,424





Fayette Street Lofts

Martinsville, VA



Fayette Street Marketplace

2 Commercial Storefronts

721 sq ft and 1,250 sq ft



FAYETTE STREET

MakeYourSpace Studios

Bill's Handyman Services 1

Windsock Tutoring 2

IT Services, LLC 3

Branding, Design & More, Inc 4

Amy's Photography Studio 5

Artists Workshop Collaborative 6

Ego Hour Hair Salon 7

BestBuds ManCave CoOp 8

Speech Therapy Lab 9





50 one-bedroom apartments
12 two-bedroom apartments
1 three-bedroom apartment

77,860 sq ft

Total: \$13,370,654

Construction: \$10,894,156

Historic Tax Credits Received: \$5,671,984

One
ELLSWORTH

1 Ellsworth Street Martinsville



Dedicated bike garage

6 floors
63 apartments



CHURCH STREET



Retail
Deli
Market
Office
Salon
Fitness
Etc...

Ground Floor: 3,950 sq ft



Rooftop Venue



One Ellsworth

Martinsville • Henry County

HISTORIC COLLECTIVE

Community Supported Preservation

HistoricCollective.com

