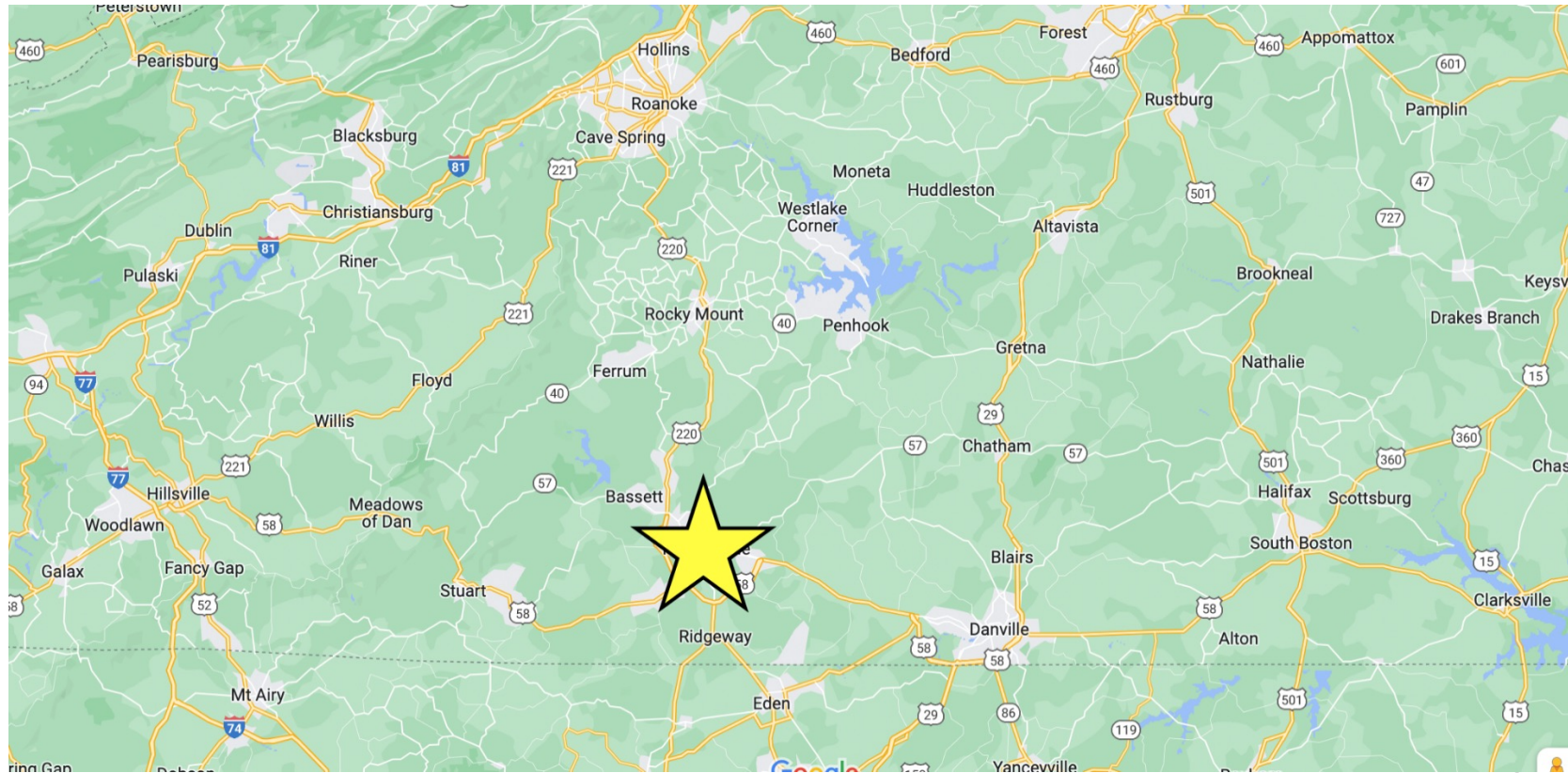
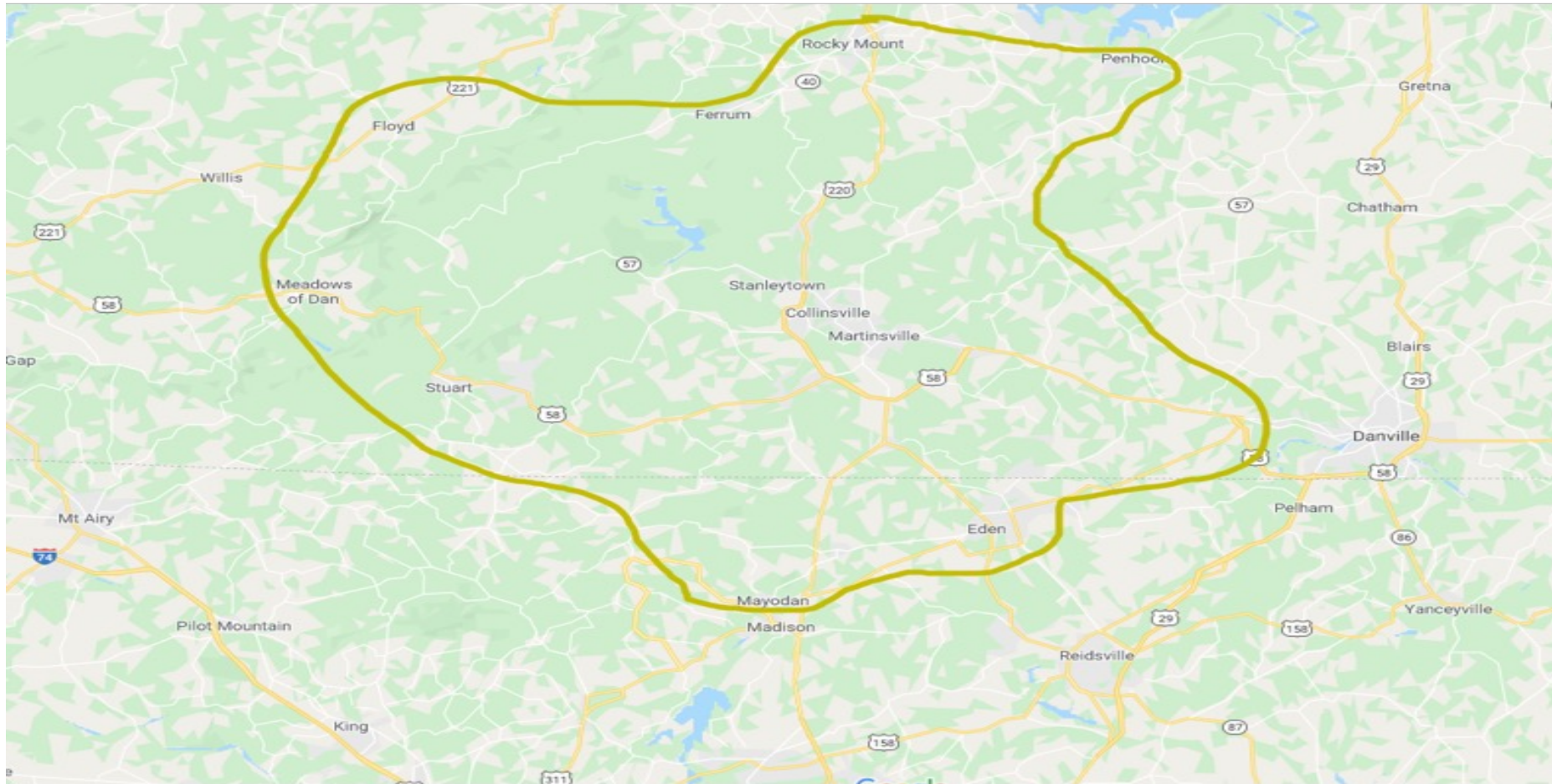
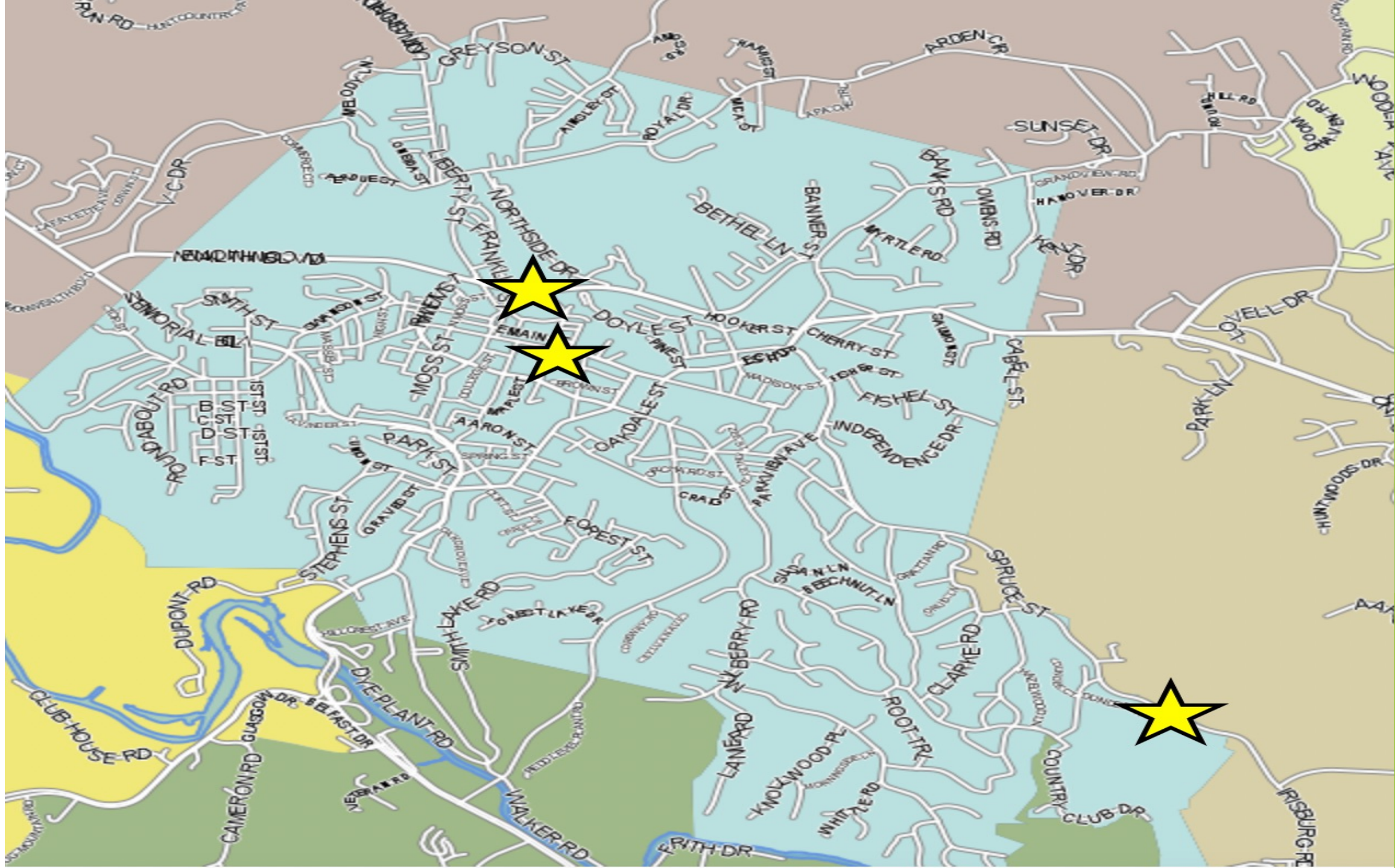


Martinsville, VA



Trade Area



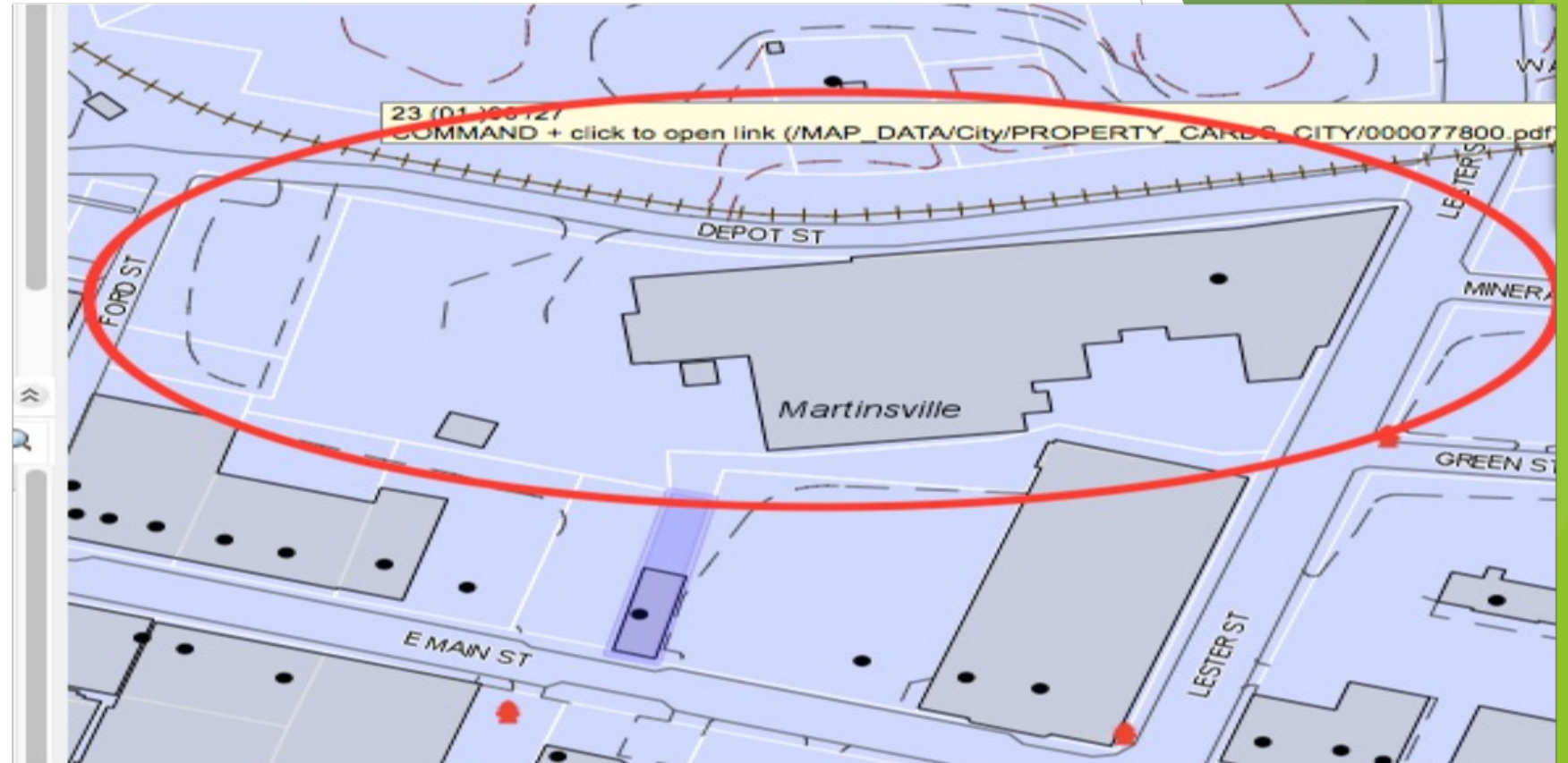


American Furniture Plant 10

4951 Lester St.
Martinsville

97,799 SF
On 3.4 Acres
Built 1904 - 1970

City has Option



**American
Furniture
Plant 10**

**Former Furniture
Plant in Uptown**

**Phase II
Completed**

**Contributing
Structure to
Historic District**



American Furniture Plant 10

Across from Trail
Spur

Great Mixed Use
Opportunity w/
Infill Possibility

Currently
undergoing a
Feasibility Study



Present



Future

**BB&T Property
200 E Church St
Martinsville**

**+ - 60,000 SF
Brick Branch c.
1957
Concrete Tower
c. 1972**

City Owned



**BB&T Property
200 E Church St
Martinsville**

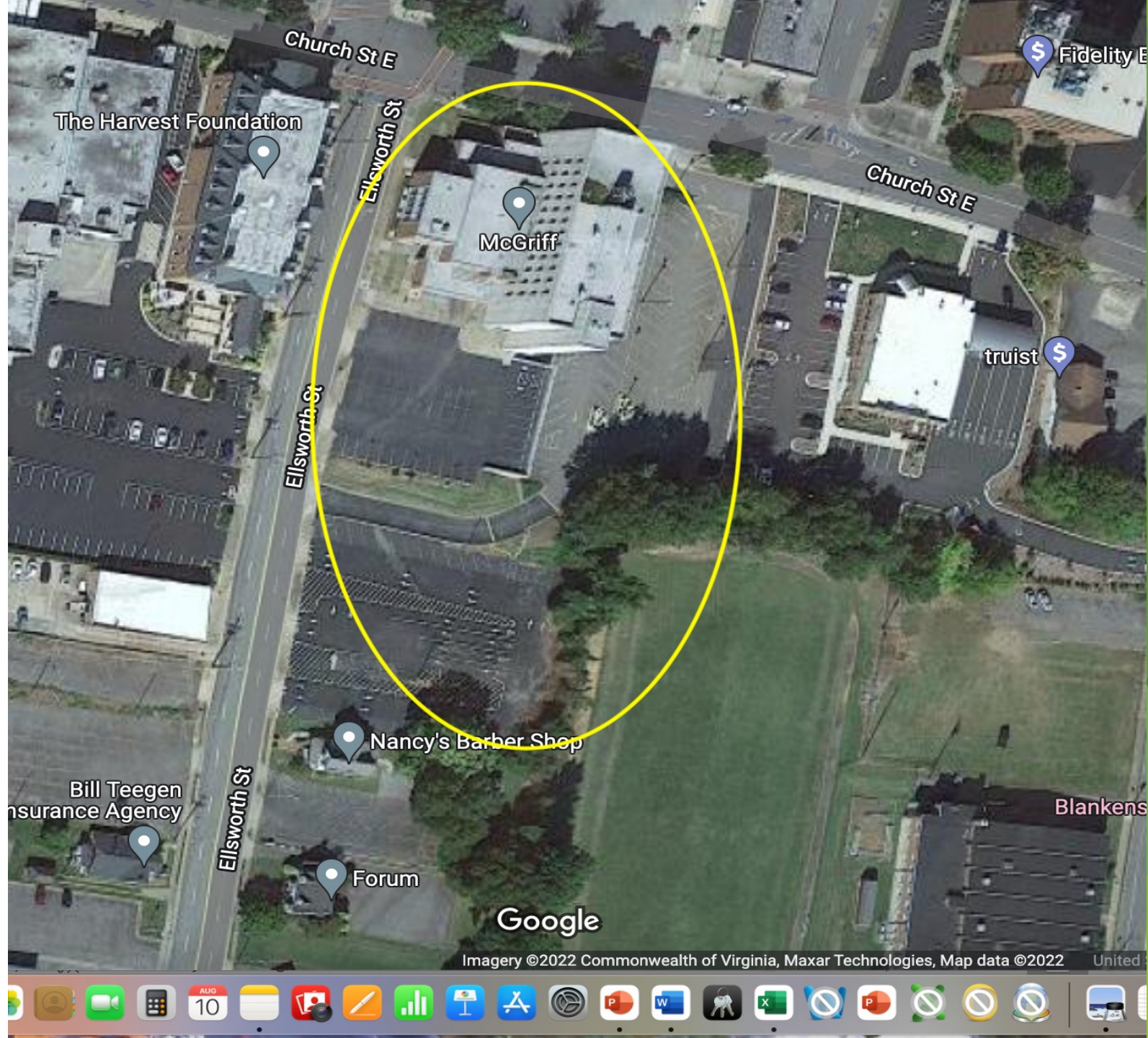
Phase II Complete

**VBAF Grant
Awarded**

**Contributing
Structure**

**50+ Apartments
Possible**

Infill Opportunity



Carter Property
~125 Acres
\$355,500 Asking

All Utilities
Available to the
Site

Road Frontage
Trail Access
Commercial Nearby

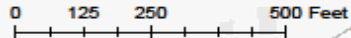
James Coleman
Rives S. Brown
Realty
276-732-0734



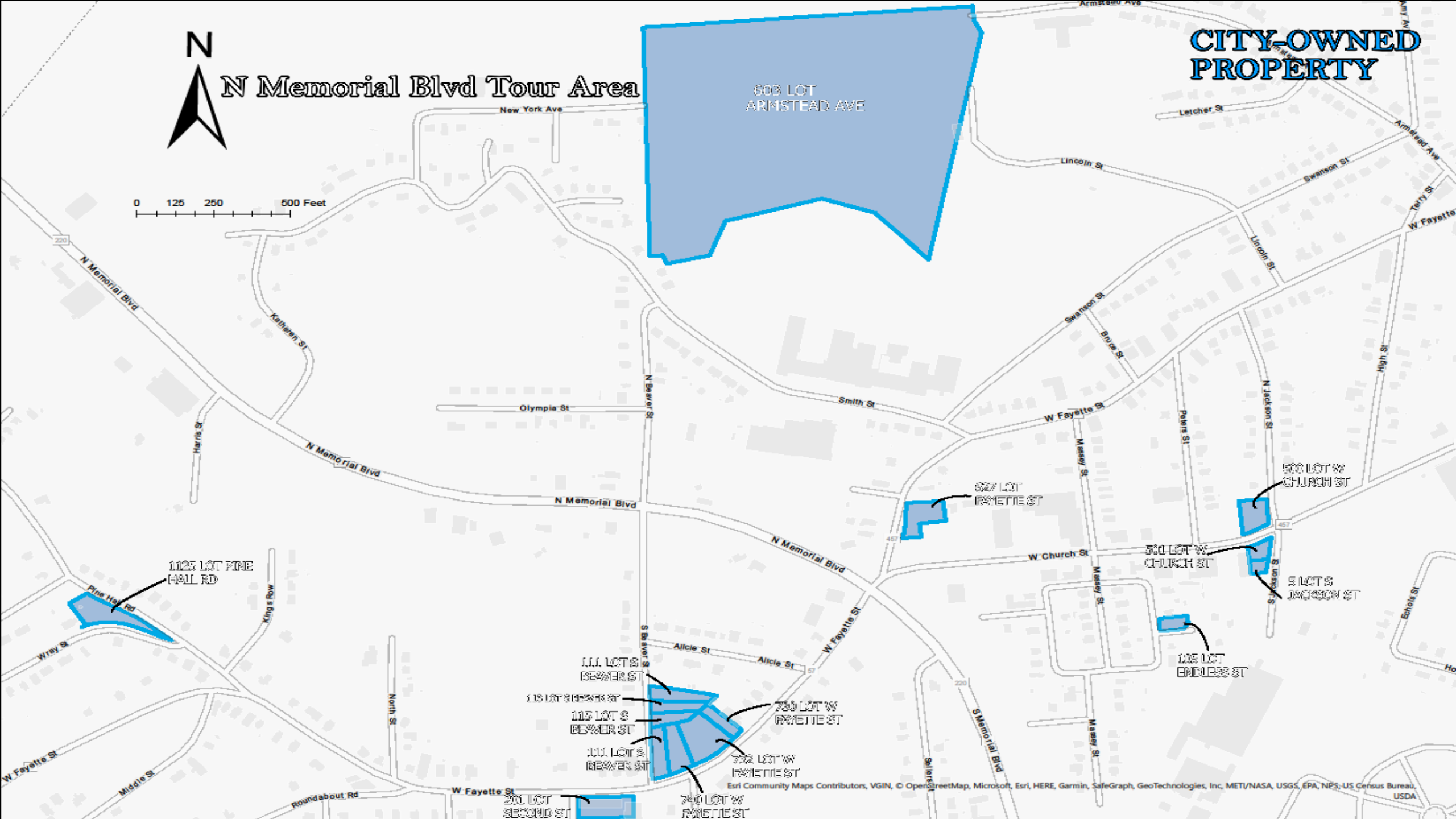


N Memorial Blvd Tour Area

**CITY-OWNED
PROPERTY**



603 LOT
ARMSTEAD AVE



CITY-OWNED PROPERTY

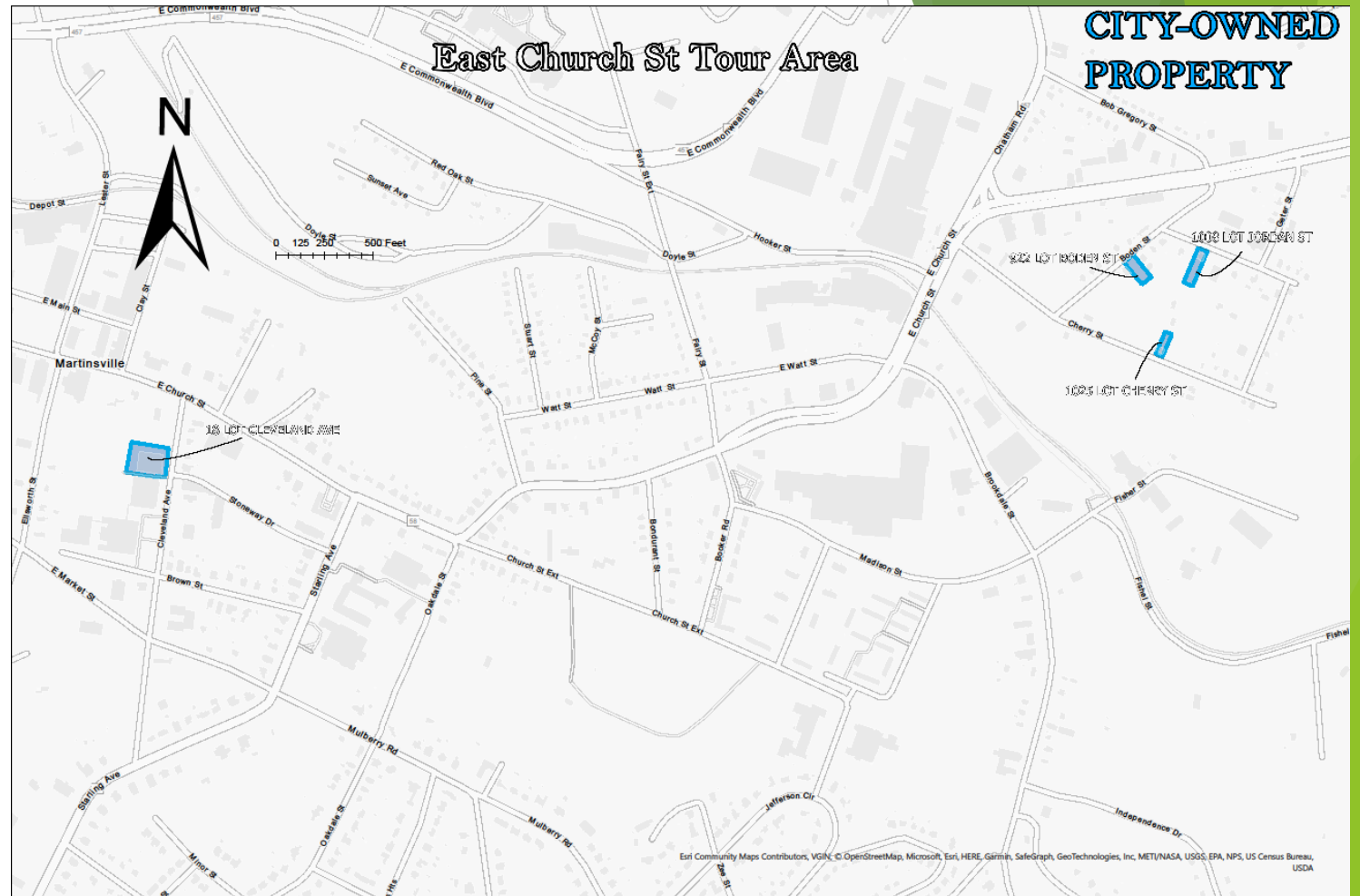
South Memorial Blvd Tour Area



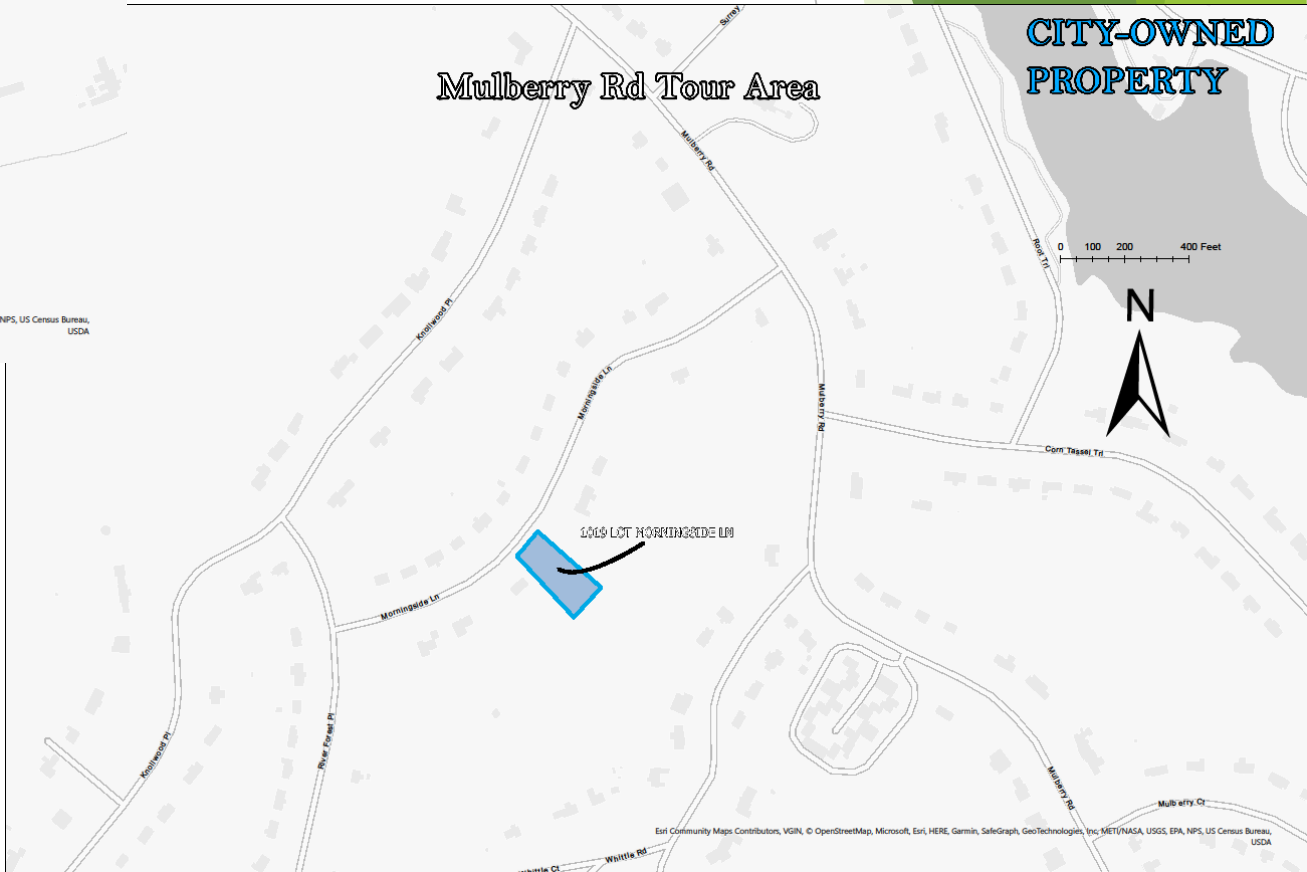
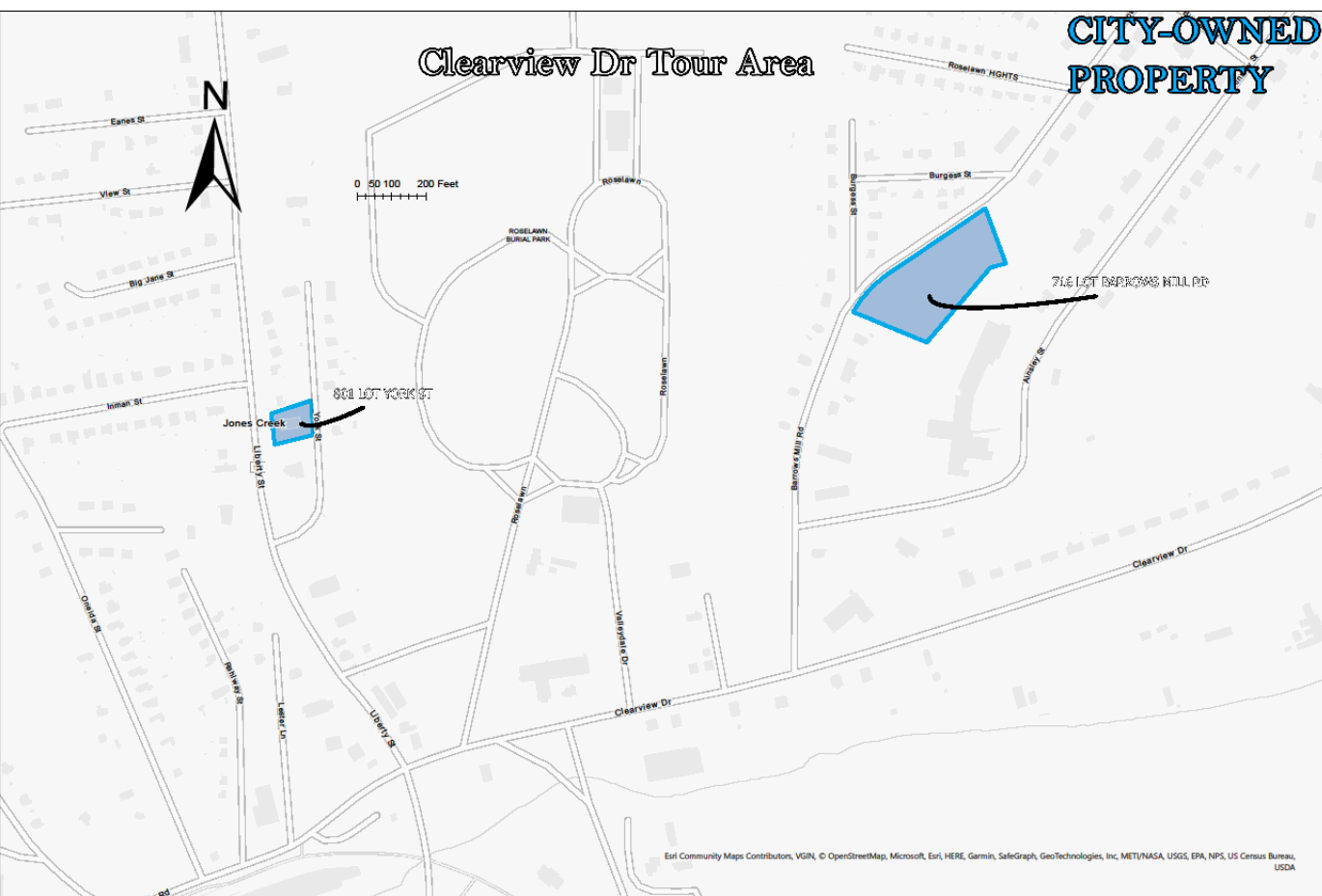
Esri Community Maps Contributors, VGIN, © OpenStreetMap, Microsoft, Esri, HERE, Garmin, SafeGraph, GeoTechnologies, Inc, METI/NASA, USGS, EPA, NPS, US Census Bureau, USDA

East Church St Tour Area

CITY-OWNED PROPERTY



Esri Community Maps Contributors, VGIN, © OpenStreetMap, Microsoft, Esri, HERE, Garmin, SafeGraph, GeoTechnologies, Inc, METI/NASA, USGS, EPA, NPS, US Census Bureau, USDA



Contacts

- ▶ Mark McCaskill
- ▶ Community Development Director
- ▶ City of Martinsville
- ▶ 276-403-5169
- ▶ mmccaskill@ci.Martinsville.va.us
- ▶ Jeff Sadler
- ▶ Housing and Revitalization Coordinator
- ▶ Martinsville/Henry County
- ▶ 804-400-6872
- ▶ jefsadler@gmail.com